

Storm Drain Stenciling Program

Maintenance and cleaning of catch basins not located on a public street are the responsibility of the property owner. No material should ever be dumped into a catch basin.

To help to educate employees and discourage illegal dumping, property owners may wish to stencil their catch basins with a "Don't Dump" message. BWSC will loan "Don't Dump" stencils to interested business owners.

For owners planning new or resurfacing of existing parking lots, permanent "Don't Dump" castings are available for purchase. For further information, contact the Commission's Communications Department at 617-989-7000.

When It Rains, It Drains.
Protect Our Local Waterways.



Report Illegal Dumping

The dumping of any material into a catch basin is illegal in Boston. If you observe someone dumping, immediately report it to Boston Water and Sewer Commission at **617-989-7000**.



**Boston Water and
Sewer Commission**

Community Services Department
617-989-7000

980 Harrison Avenue
Boston, MA 02119-2540
www.bwsc.org

Martin J. Walsh
Mayor, City of Boston

Henry F. Vitale
*Executive Director/CFO
and Treasurer*

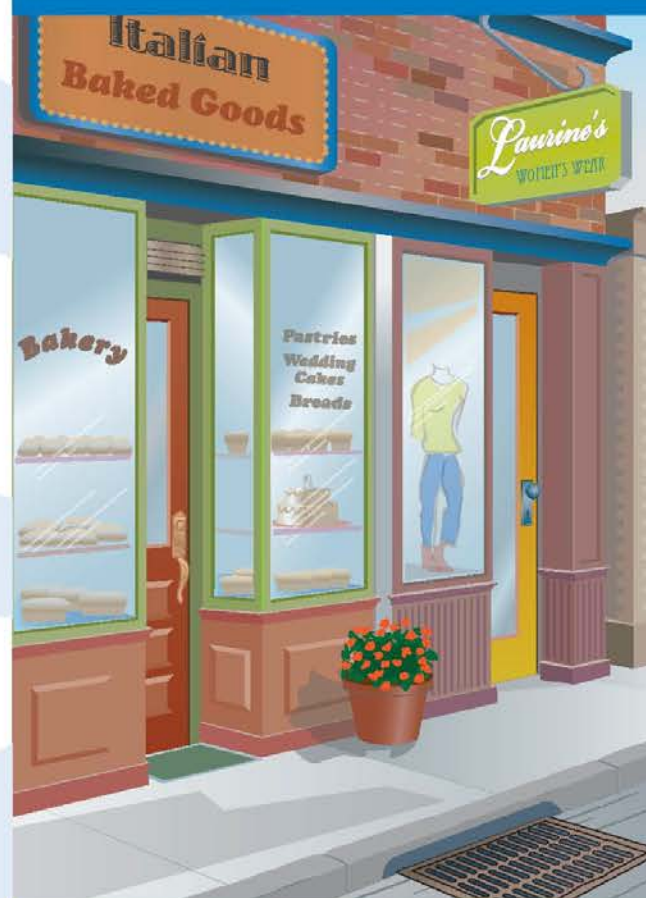


2014



Boston Water and Sewer Commission

Stormwater Management for Small Businesses

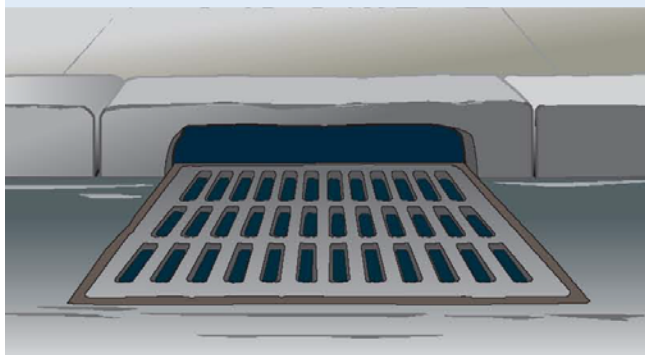


What Is Stormwater Pollution?

Stormwater is rain or snowmelt that flows over the ground. As stormwater runs over impervious surfaces, like driveways, roofs, sidewalks, and streets, it can pick up pollutants that have collected on these surfaces—such as motor oil, fertilizers, pesticides, and trash—and deposit them into catch basins.

Stormwater flows into the storm drain system and is discharged, without treatment, into nearby waterways, including the Charles, Neponset, and Mystic rivers, and Boston Harbor.

Property owners are responsible for all pollutants leaving their property, including pollutants in stormwater. Here are some things you and your employees can do to prevent stormwater pollution.



Property Maintenance Tips

- ▶ Sweep outdoor areas daily for trash and litter control. Do **not** dispose of trash in catch basins.
- ▶ Provide trash receptacles in highly visible locations and outdoor receptacles for cigarette butts, particularly in employee break areas.
- ▶ Keep the area surrounding your dumpster clean and the lid closed. Make sure the clean-out plug is properly secured to prevent leaking.
- ▶ If you must hose down an area, don't use detergents or chemical cleaners to wash sidewalks or driveways.
- ▶ Dispose of all waste wash water in a janitorial sink or a floor drain that is properly connected to the sewer system. Never pour wash water onto a parking lot, alleyway, sidewalk, or street, as these areas ultimately drain to local waterways.



How to Dispose of Hazardous Waste

Never dump hazardous waste—including chemicals, automotive fluids, paint, and commercial waste—**into catch basins**. Dispose of hazardous waste properly.

If you are unsure as to how to dispose of a certain material, consult the manufacturer of the product or call the Massachusetts Hazardous Waste Hotline for Businesses at 617-292-5898.

Reminders for Restaurants and Food Establishments

- ▶ Properly maintain any grease traps in your establishment, in accordance with Boston Water and Sewer Commission (BWSC) regulations.
- ▶ Dispose of cooking oil and grease properly either in a receptacle designed to contain grease or by hiring a waste hauler.
- ▶ Do not pour oil and grease into sinks, floor drains, catch basins, or onto the ground.
- ▶ Wash garbage cans, floor mats, and kitchen equipment in designated wash areas that drain to the sewer system.

Help Prevent Stormwater Pollution

- ▶ Don't dump into catch basins.
- ▶ Keep property clear of trash and debris.
- ▶ Keep dumpster area clean.
- ▶ Provide trash receptacles for customers.
- ▶ Dispose of wash water properly.
- ▶ Stencil storm drains on your property.

Don't Dump!



Protect Local Waterways.