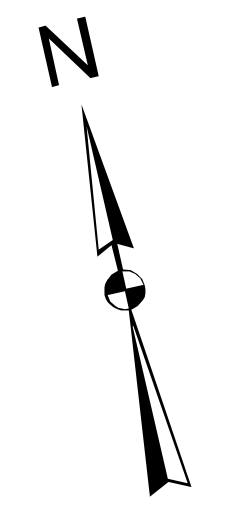


- Forestry 61
- Agriculture 61A
- Recreation 61B
- Historical
- Agricultural Preservation Restriction
- Subdivision Open Space
- Park and Recreation
- Conservation Commission
- Conservation Commission and Park and Recreation
- Private Open Space
- Rail Trail
- School Board
- Selectmen
- State
- Water Commission

Recreational and Protected Openspace Southwick, Massachusetts

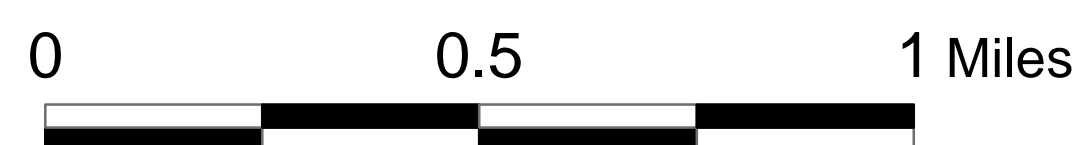
Note: This map is based on the best available data.
All information is subject to field verification.



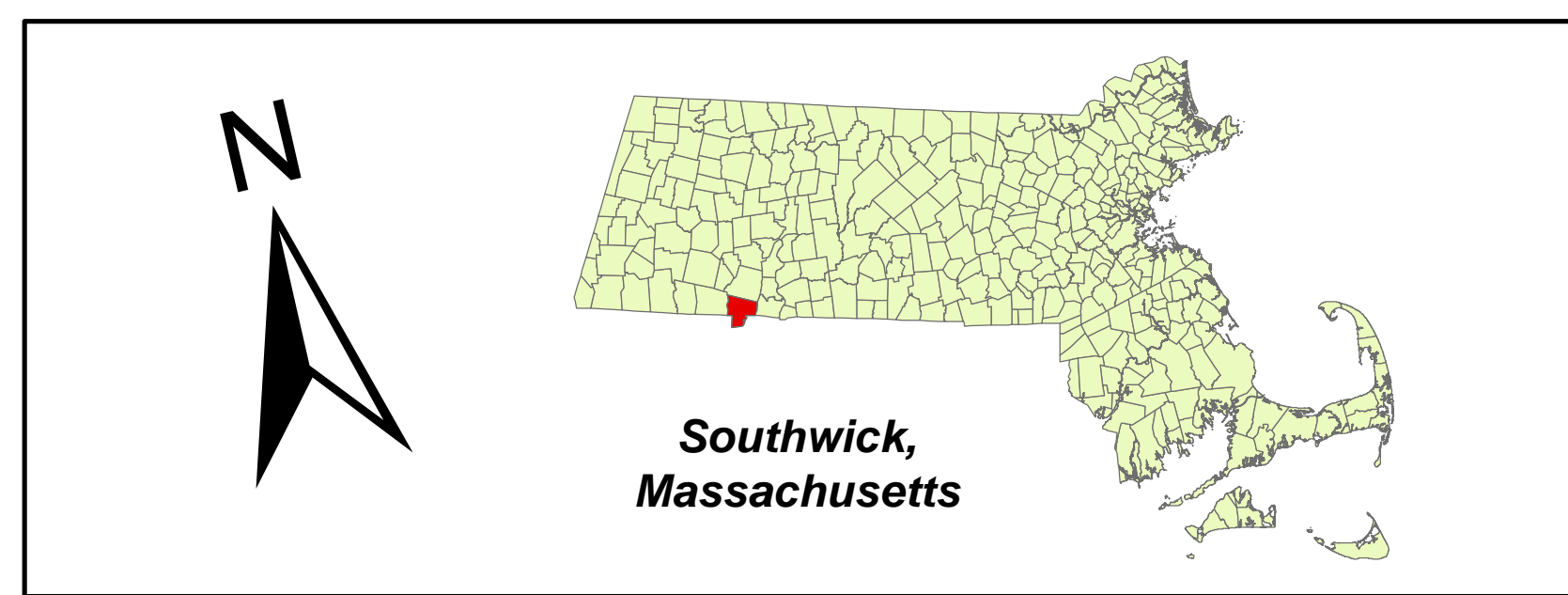


Southwick, Massachusetts





**Southwick,
Massachusetts**

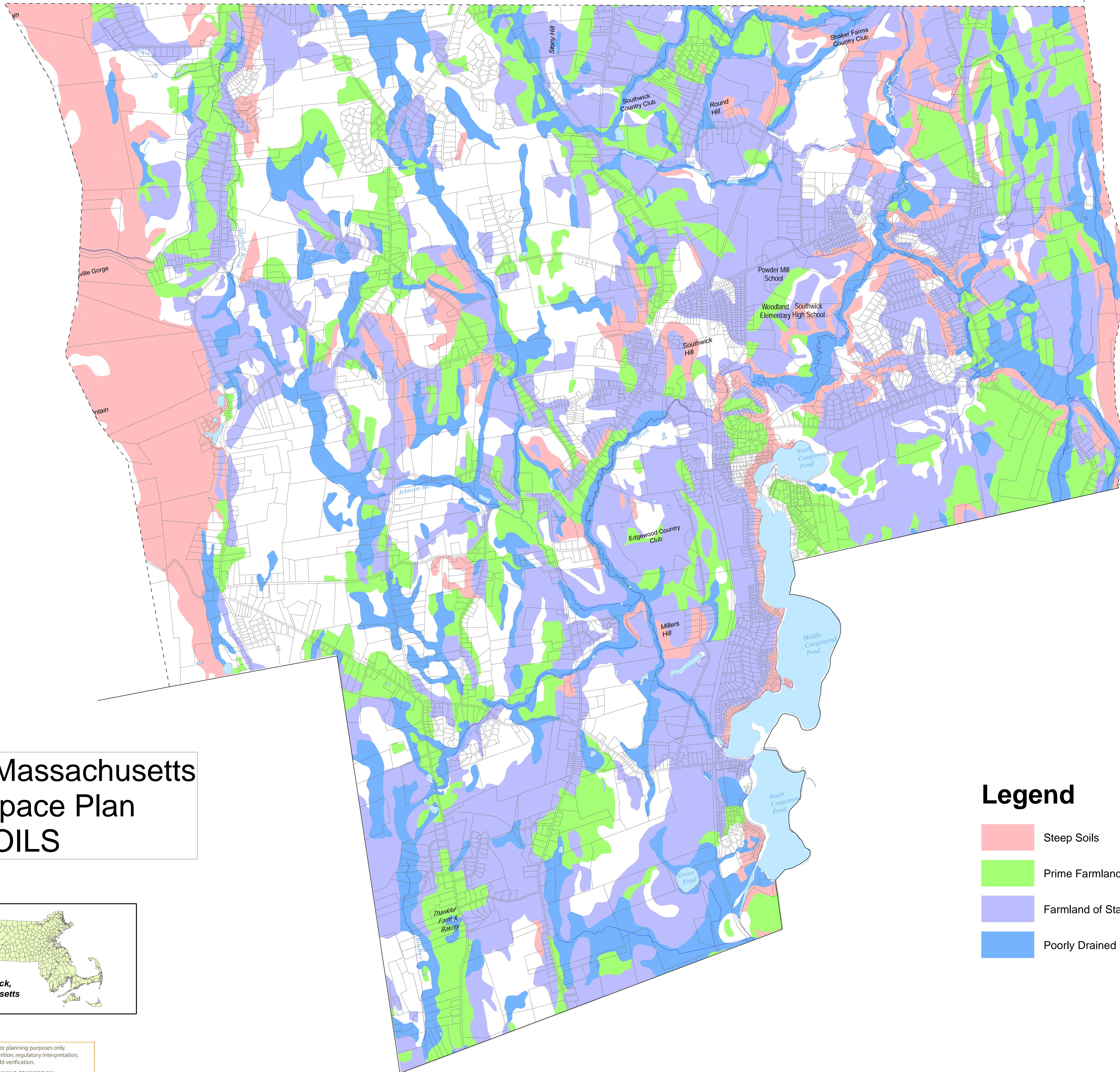


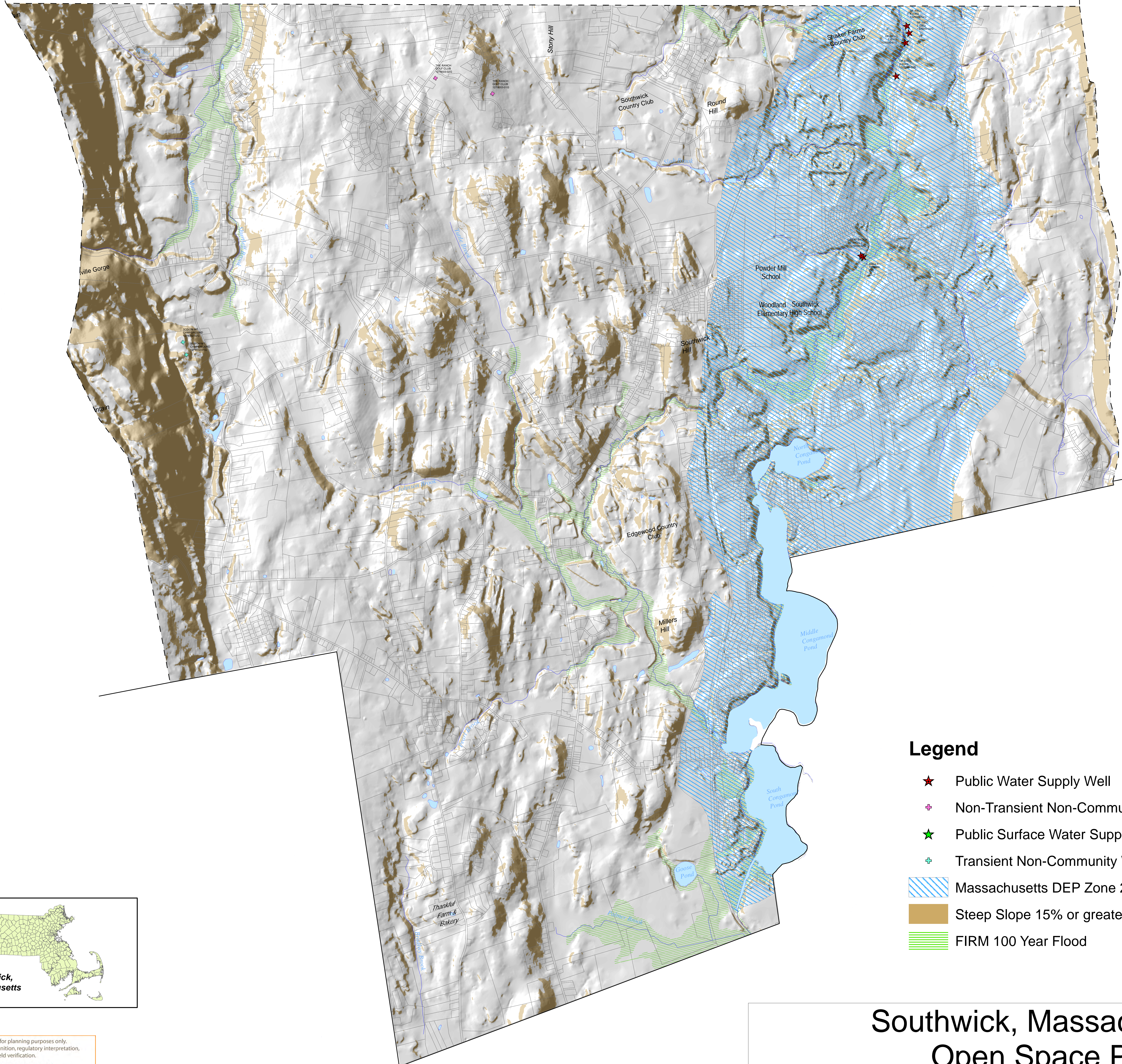
Southwick, Massachusetts Open Space Plan SOILS



Legend

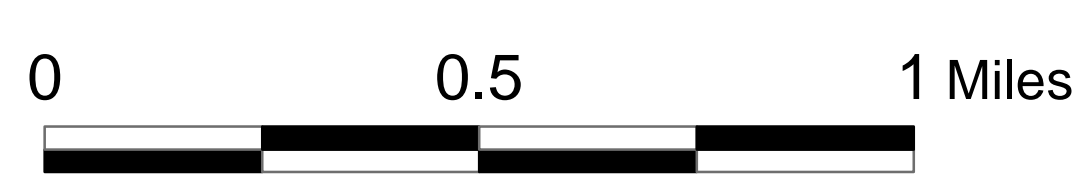
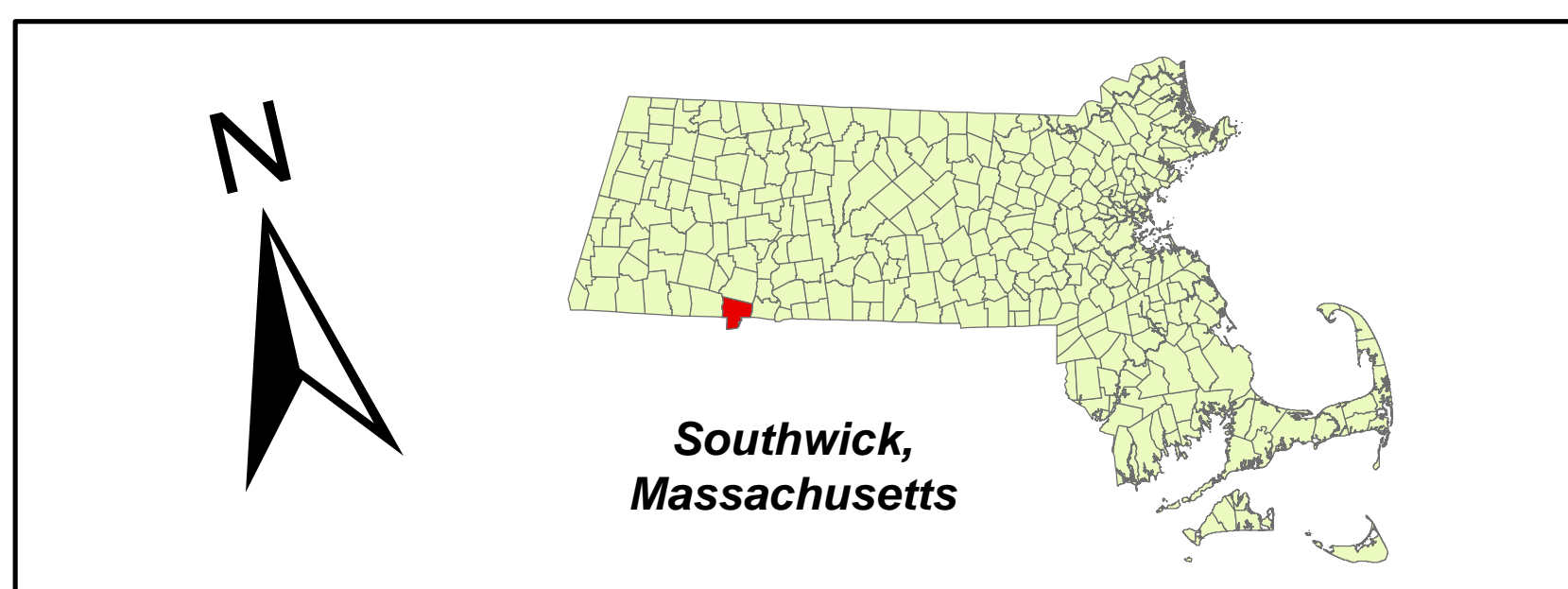
-  Steep Soils
-  Prime Farmland Soils
-  Farmland of Statewide Importance
-  Poorly Drained Soils





Legend

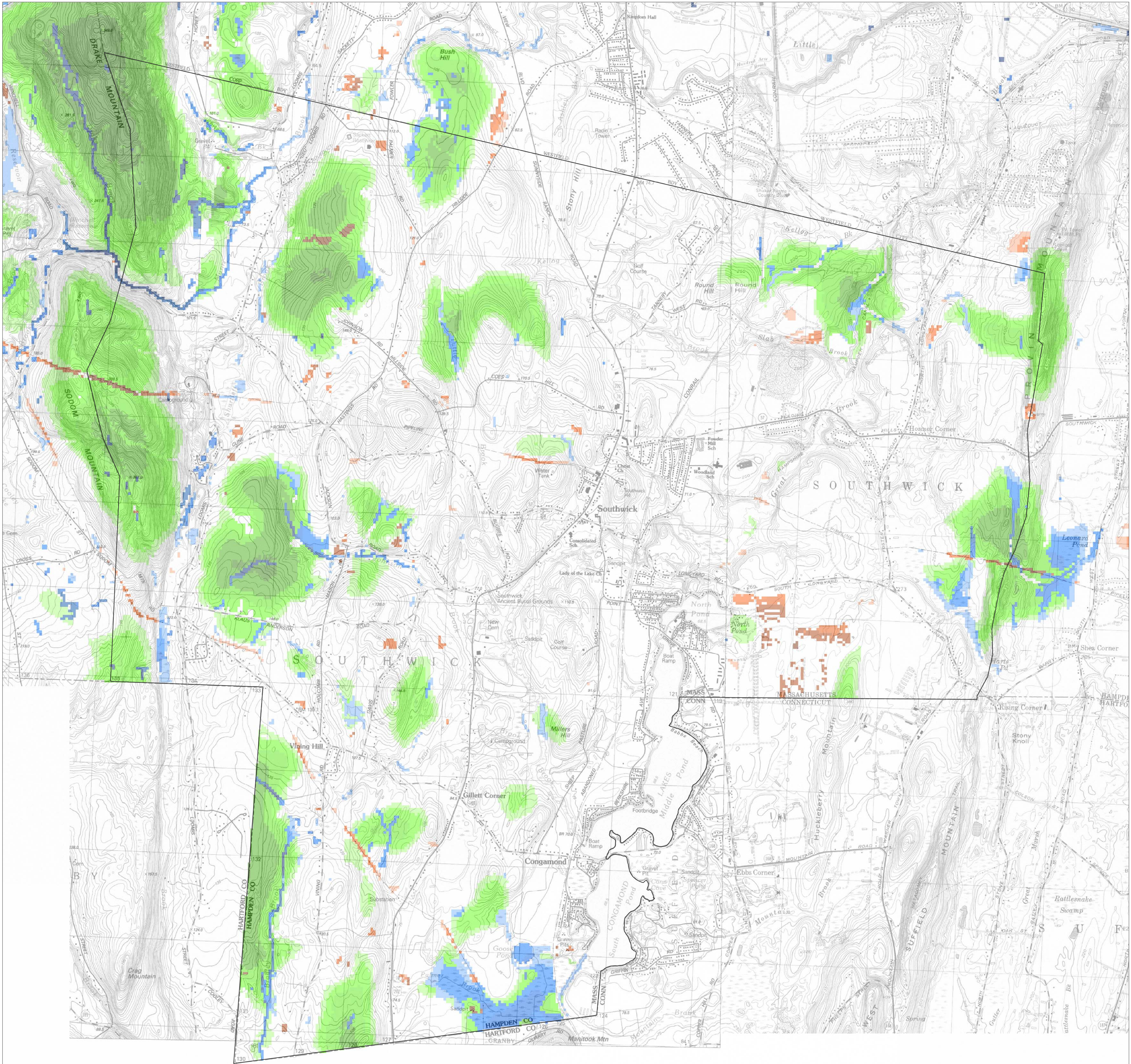
- ★ Public Water Supply Well
- ✦ Non-Transient Non-Community Water Supply
- ★ Public Surface Water Supply
- ✦ Transient Non-Community Water Supply
- ▨ Massachusetts DEP Zone 2
- Steep Slope 15% or greater
- ▨ FIRM 100 Year Flood



Southwick, Massachusetts
Open Space Plan
TOPOLOGY, FLOOD AND WATER SUPPLY

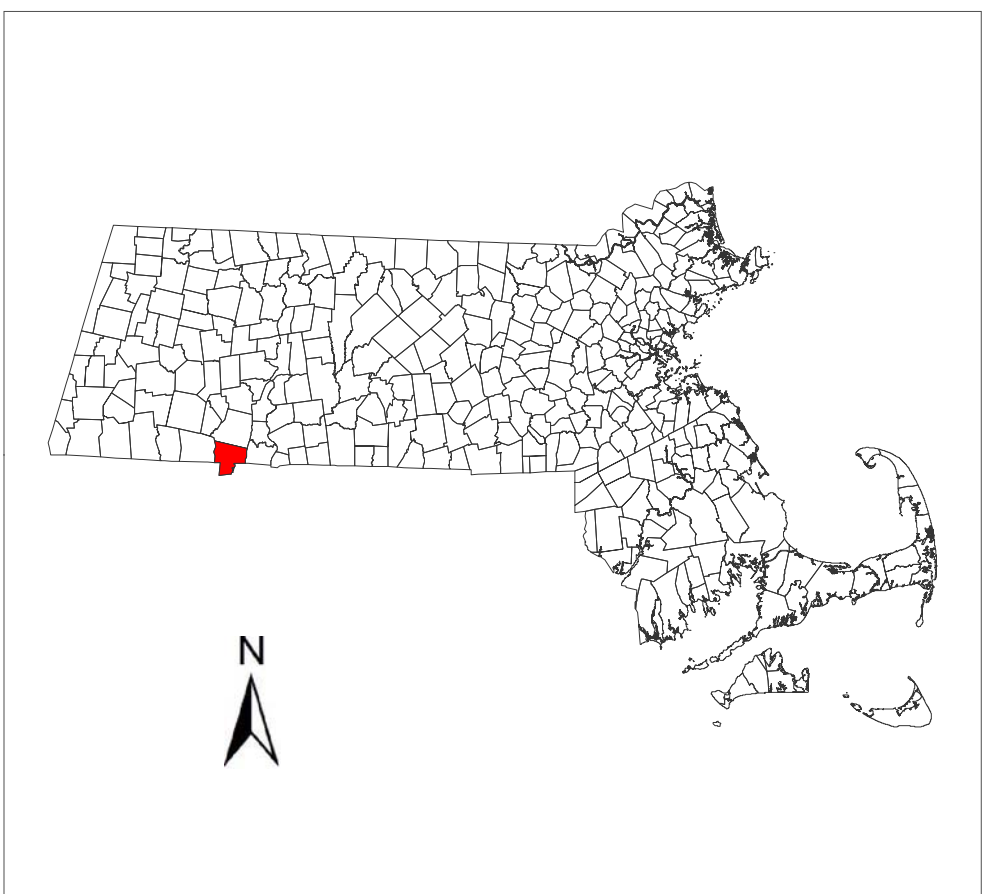
CAPS Index of Ecological Integrity (IEI)

Town of SOUTHWICK, MA



0 0.5 1 2 Miles

Updated November 2011



IEI, Index of Ecological Integrity

Top 50% of the Landscape



UMass
Extension
CENTER FOR AGRICULTURE

The IEI, or Index of Ecological Integrity, delineates the relative wildlife habitat and biodiversity value of any point on the landscape based on landscape ecology principles and expert opinion. The IEI is calculated by the Conservation Assessment and Prioritization System (CAPS) computer program developed at the University of Massachusetts, Amherst. Depicted on this map are those areas representing 50% of the landscape with the highest IEI values; the darker the color the higher the integrity value. For more information see: <http://www.masscaps.org>.

Coastal beaches and rocky intertidal shores are included as Coastal Wetland and Aquatic.

These maps were funded by grants from The Nature Conservancy and the Federal Highway Administration via a grant administered by the Massachusetts Department of Transportation, the Massachusetts Department of Environmental Protection and the U.S. Environmental Protection Agency under section 104 (b) (3) of the U.S. Clean Water Act. Data sources include the Office of Geographic and Environmental Information (MassGIS).

Prepared in cooperation with the Massachusetts Department of Transportation Office of Transportation Planning, and the United States Department of Transportation, Federal Highway Administration. The contents of this report reflect the views of the author(s), who is (are) responsible for the facts and the accuracy of the data presented herein. The contents do not necessarily reflect the official view or policies of the Massachusetts Department of Transportation or the Federal Highway Administration. This report does not constitute a standard, specification, or regulation.